

How to Play 'Flip Chess 90' & 'Flip Chess 180' ...

Game Setup

- Open the game case, which transforms into a 4x8 board.
- Determine who goes first by having each player roll one die. The player with the higher-ranking chess piece starts (Pawn, Knight, Bishop, Rook, Queen, & King).

For Flip Chess 90:

- Place your colored dice with the Pawn side up in the first row. Move your pieces following standard chess rules.
- **Flip!** After each move, players must flip the moved dice 90 degrees to any of the four sides they choose, but not to the opposite side.
- **Piece Limit:** Players may have only 1 of any type of chess piece on the board at a time - no duplicates. You may not flip to a side that you already have on the board.

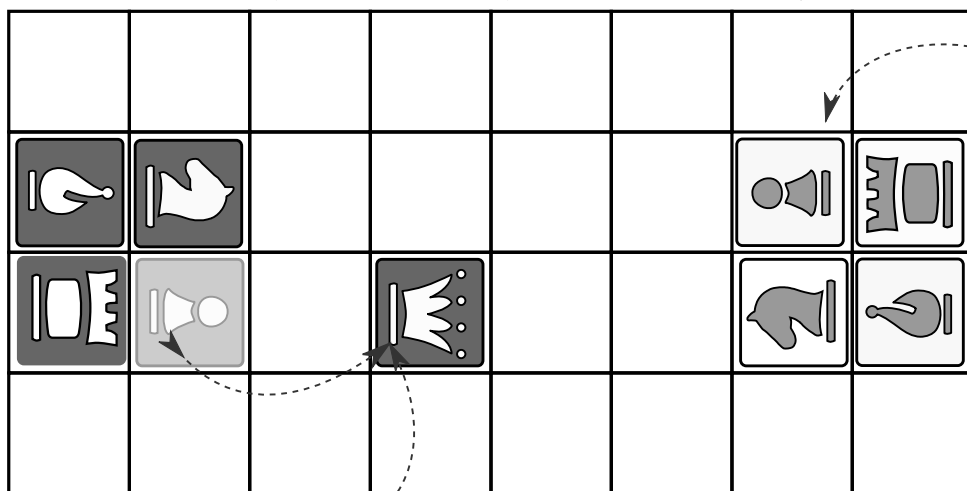
For Flip Chess 180:

- Place your colored dice in a cluster of 4 with the sides up as in the below example
- Move your pieces following standard chess rules.
- **Flip!** After moving a piece, the player must flip it to the opposite side: Pawn becomes King, Knight becomes Queen, Bishop becomes Rook, and vice versa.

For Both Games:

- **Final Flip:** When a player has only 1 die remaining, they may perform one final flip on their turn.
- **Winning:** Be the first to capture your opponent's King or clear all of their pieces from the board
- **Pawn Promotion:** Players may decide beforehand whether to promote Pawns to a Queen when they reach the opposing side. Any flip involving a Promoted Pawn would act as a Queen.

◆ ----- ◆
Game Set Up and Example Move for Flip Chess 180:



Set your pieces up like this

You must flip your piece to the opposite side after moving

This Player moved their Pawn which gets flipped to become a King



Explore all of our game sets at [DiceMakers.com/games](https://www.dicemakers.com/games).