

How to Play Pawn Football ...

Setting Up:

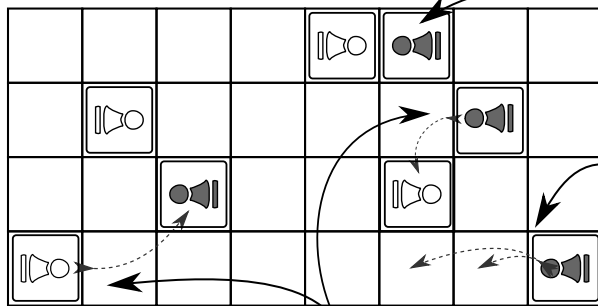
Open your **Flip Chess** game to create a 4x8 game board. You can also use the game board and pawns provided below.
Put your 4 dice on the squares near your side with the Pawn side facing up.

Playing the Round:

On your turn, move one of your dice like a Pawn (see below). You must capture one of your opponent's pieces if you can.
You win the round and earn a point if your Pawn gets to the far side or if you capture more of your opponent's Pawns (when no moves are left).

Remember, ties can happen. First player to 10 points wins.

*Enjoy playing **Pawn Football!**
From your pals at DiceMakers.com*



*These Pawns are at Stalemate.
They can only attack diagonally
to move now.*

*Pawns can move 1
or 2 spaces on
their 1st turn.*

Pawns attack diagonally.



Explore all our
physical game sets
at DiceMakers.com/games.

Cut Out the Pawns Below to Try Pawn Football Now:

