

How to Play Flip Chess ...

Game Setup:

1. Open the game case to create a 4x8 game board.
2. Select the 4 dice of your color. There is a chess piece engraved on each side: Pawn, Knight, Bishop, Rook, Queen, and King.
3. Place each players' 4 dice in the four squares closest to their side of the board with the Pawn side facing up.

Gameplay:

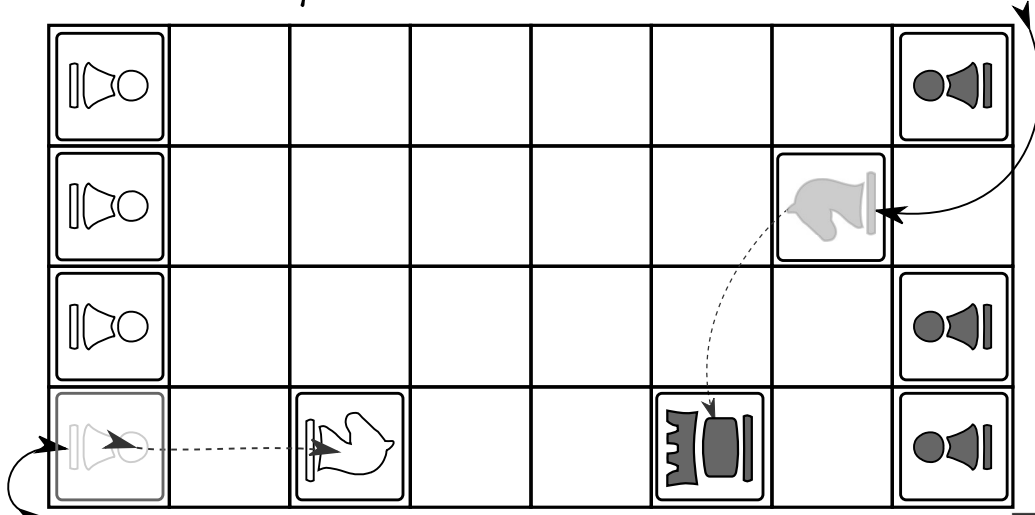
1. On your turn, Use chess movement and capture rules to move 1 of your dice according to the chess piece displayed on top, capturing 1 of your opponent's pieces if possible
2. After moving, rotate the die to the next chess piece in the promotion order for your next turn. (See promotion order below)
3. When any of your dice reach the opposite side of the game board and a Pawn is next in the promotion order, you may promote the Pawn to your choice of piece.
4. Capture all of your opponent's dice to win.

Promotion Order: Pawn → Knight → Bishop → Rook → Queen → King → Pawn

*Enjoy playing **Flip Chess!**
From your pals at DiceMakers.com*

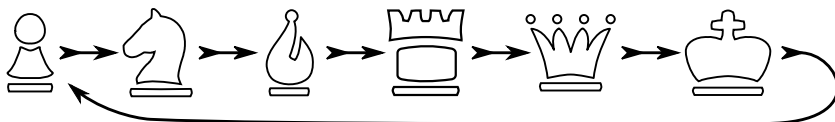
Example Moves:

*Player moves Knight on 2nd turn,
and promotes to a Rook for the next turn*



*Player moves pawn on 1st turn,
and promotes to a Knight for the next turn*

Promotion Order:



Explore all of
our game sets
at DiceMakers.com/games.

